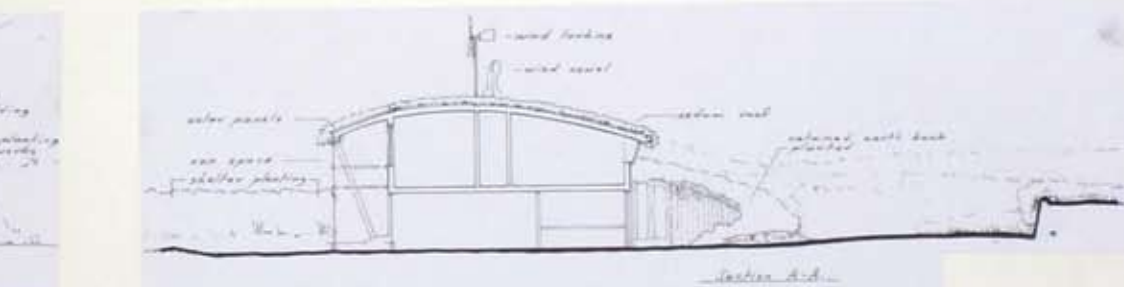
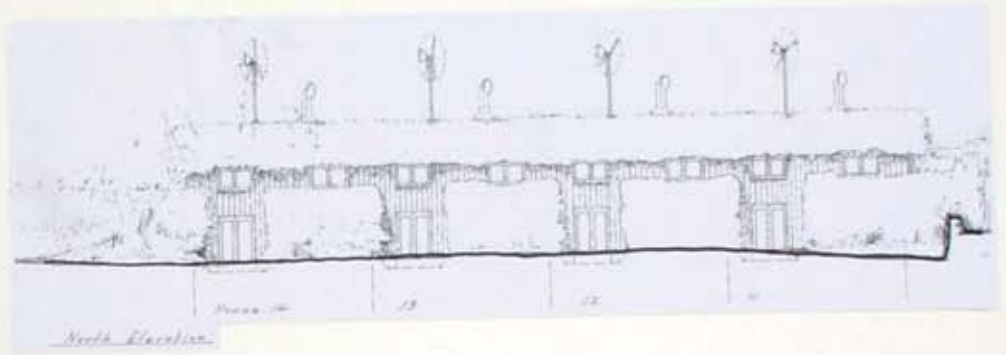
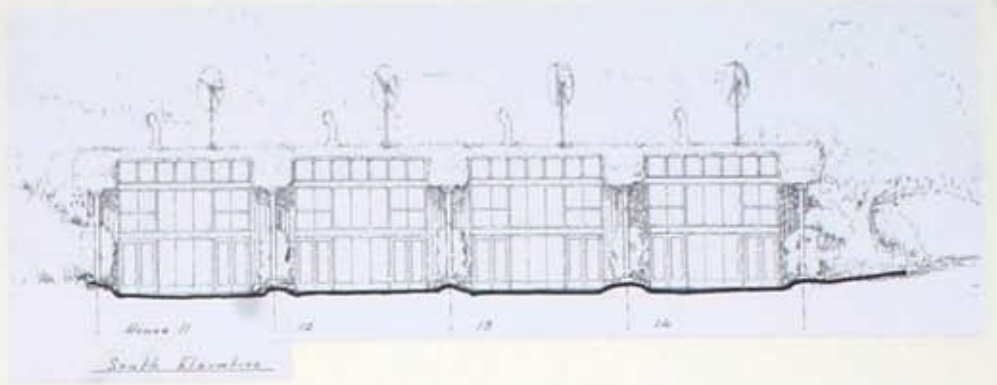


HOUSES 11-14



- Sustainability**
- Open Cell - temperature regulation by thermal mass, and permeation in the spring days
 - Transpiration
 - Green glazing
 - Suboptimal but passive solar gain
 - North South orientation
 - Shelter planting
 - Natural and recycled construction materials
 - Sustainable window drainage
 - Energy efficient fittings
- Wind tunnel for ventilation with best measures
 - Wind turbine for electricity generation
 - Solar panels for hot water
 - Biometric battery
 - Carbon neutral transport
 - Bioclimatic storage
 - Low floor area using recycled materials

